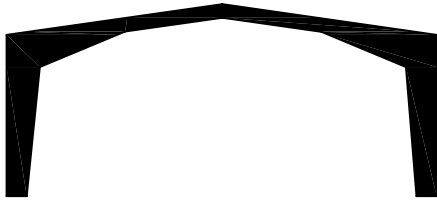
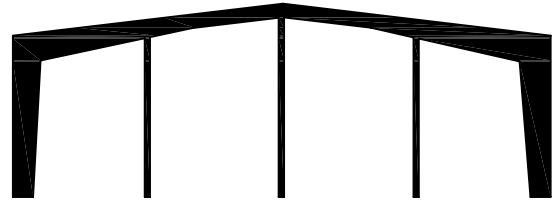


# WHITNEY STEEL BUILDING SYSTEMS

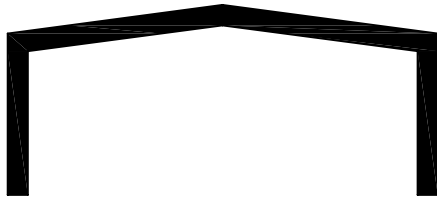
## TYPICAL FRAME TYPES



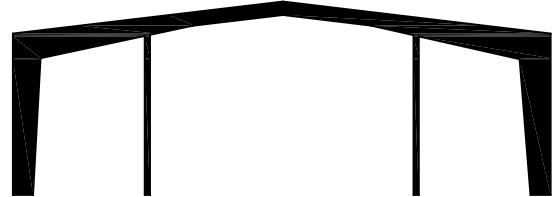
**RIGID FRAME -**  
Provides a column-free floor area, which makes it ideal for auditoriums, gymnasiums, show rooms & aircraft hangars.



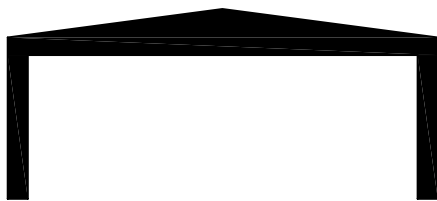
**MODULAR FRAME -**  
If interior columns do not conflict with floor plans, Modular Frames provide maximum width at less cost. Ideal for manufacturing.



**FLUSH WALL FRAME -** Provides column free interiors. Columns are placed within the girt space allowing walls to be finished in an unbroken, straight surface. Ideal for convenience stores, small offices & branch banks.



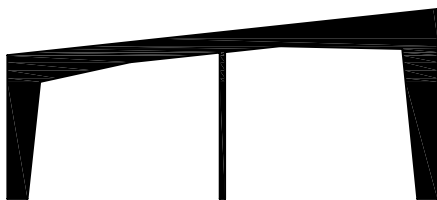
**FLUSH WALL MODULAR FRAME -** Interior columns are necessary but exterior columns are in girt space allowing interior walls to be finished in an unbroken, straight line. Ideal for large retail stores.



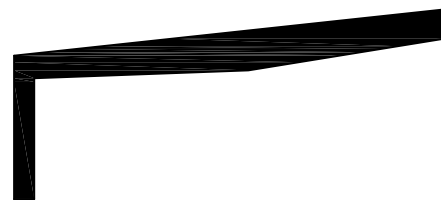
**SLOPE BEAM FRAME -** Column-free interior with greater interior clearance and less eave height. Ideal for small retail stores & offices.



**SINGLE SLOPE FRAME -** Provides one way roof drainage with column-free interior. For retail buildings, office complexes & shopping centers.



**SINGLE SLOPE MODULAR FRAME -** Requires interior columns but maintains one way roof drainage and provides maximum width at less cost. Still ideal for retail buildings, office complexes & shopping centers.



**LEAN-TO FRAME -** An economical way to increase width of existing or new buildings. Good application for retail buildings, offices & shopping centers looking to expand.